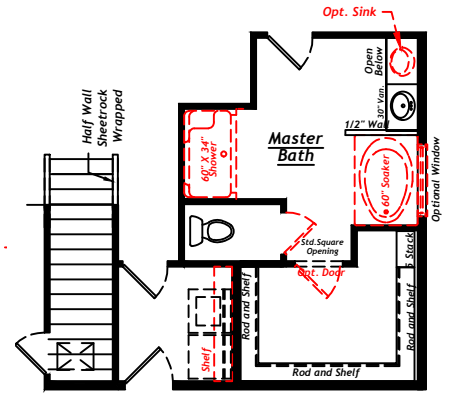
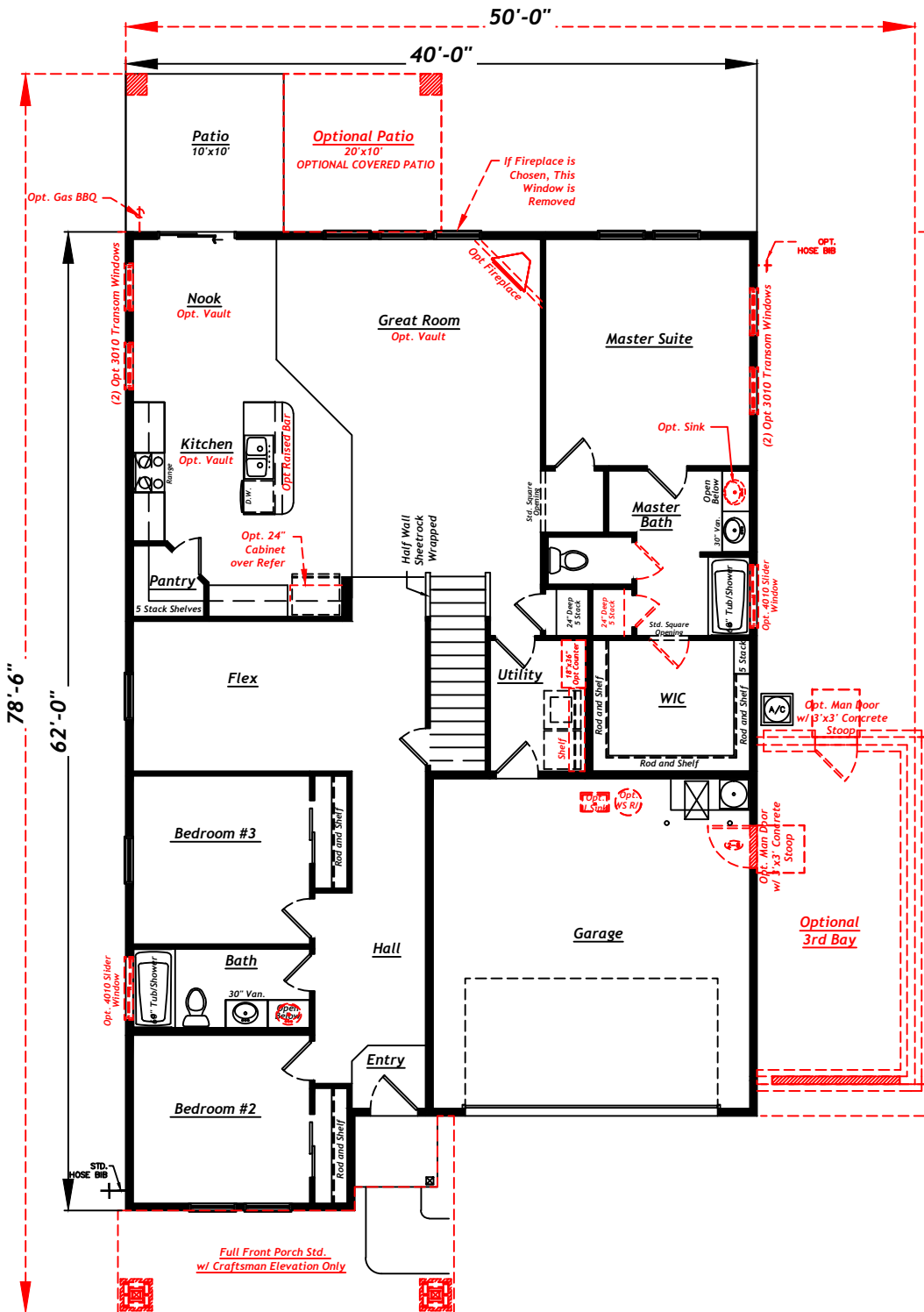


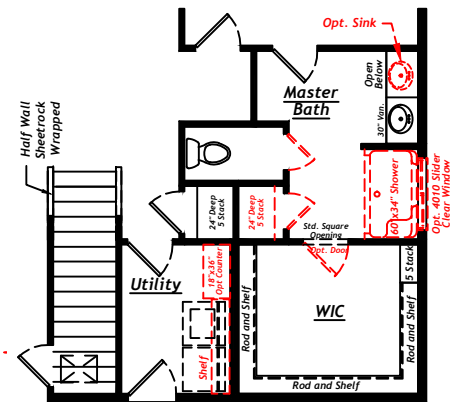
Brookfield

w/ Bonus Room

MAIN FLOOR



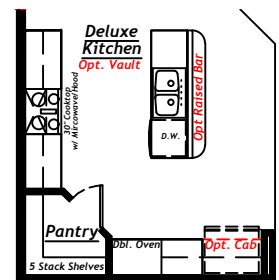
Opt. Soaker Tub with Shower



Master Bath Options
 - 60" x 34" Shower
 - Double Vanity
 - Linen Closet
 - Enclosed Toilet
 - WIC door



Opt. 60" x 42" Garden Oval Tub/Shower



Optional Deluxe Kitchen



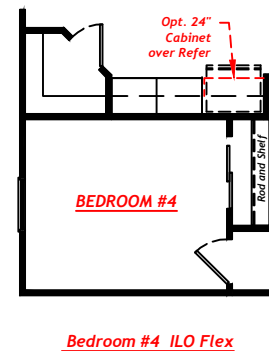
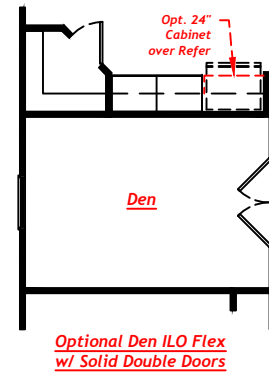
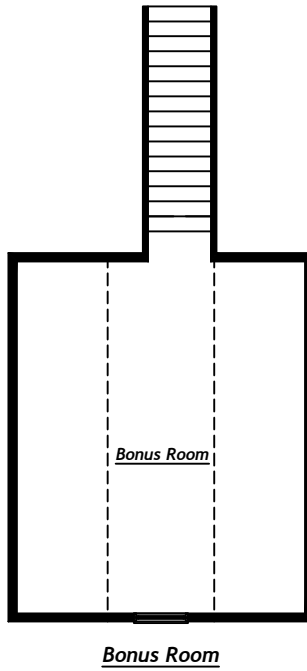
APPROXIMATELY: 2290 SQ. FT. PER ANSI Z765



Brookfield

w/ Bonus Room

page
2 of 3
**BONUS ROOM,
KITCHEN OPTIONS
AND PLAN CHOICES**



APPROXIMATELY: 2290 SQ. FT. PER ANSI Z765



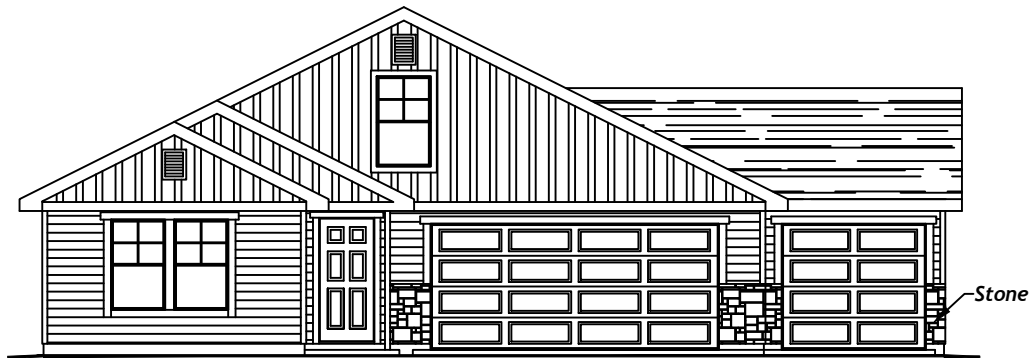
Brookfield

w/ Bonus Room

ELEVATIONS



Country



Country w/ 3rd Bay Opt.



Craftsman



Craftsman w/ 3rd Bay Opt.



APPROXIMATELY: 2290 SQ. FT. PER ANSI Z765

